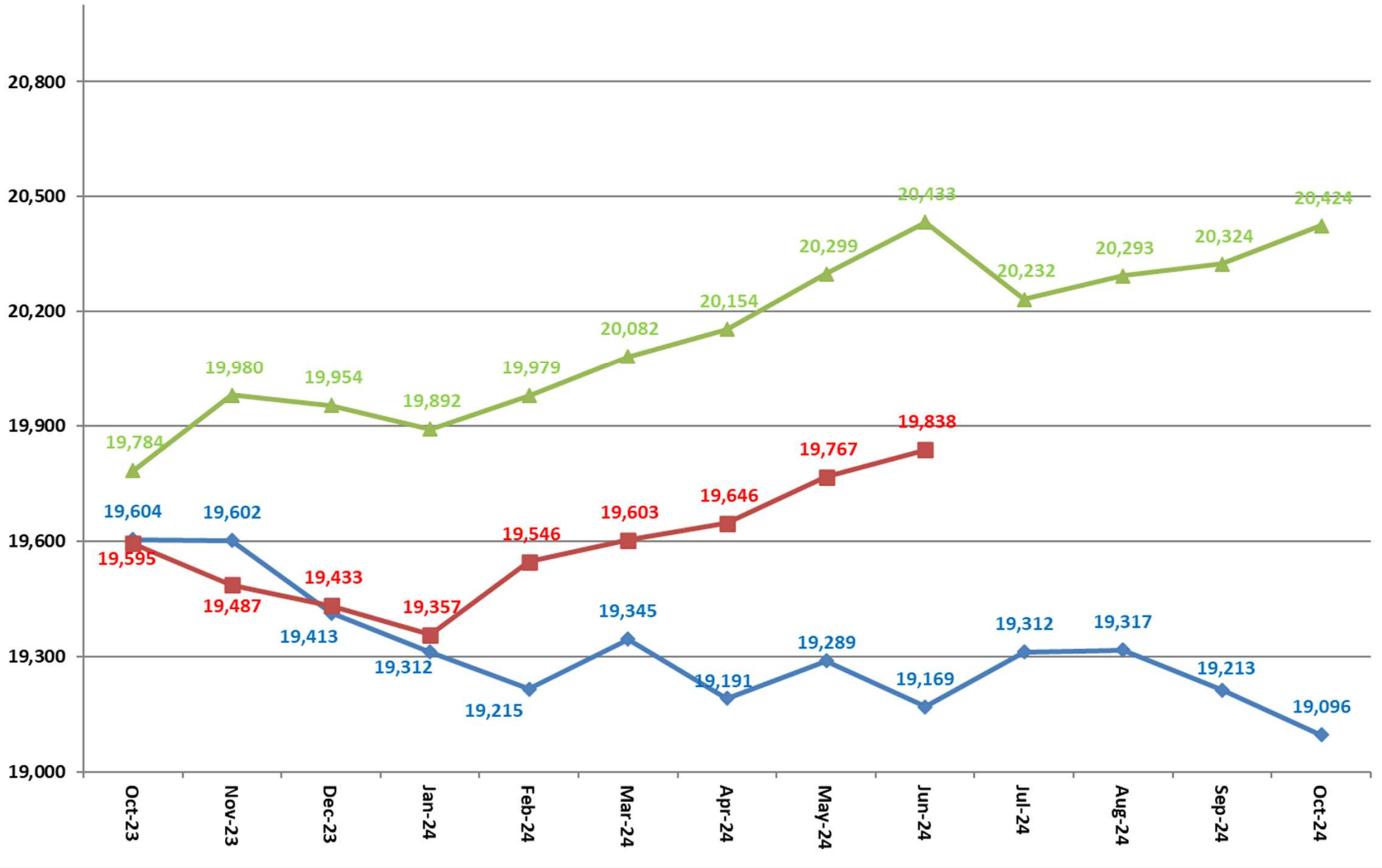
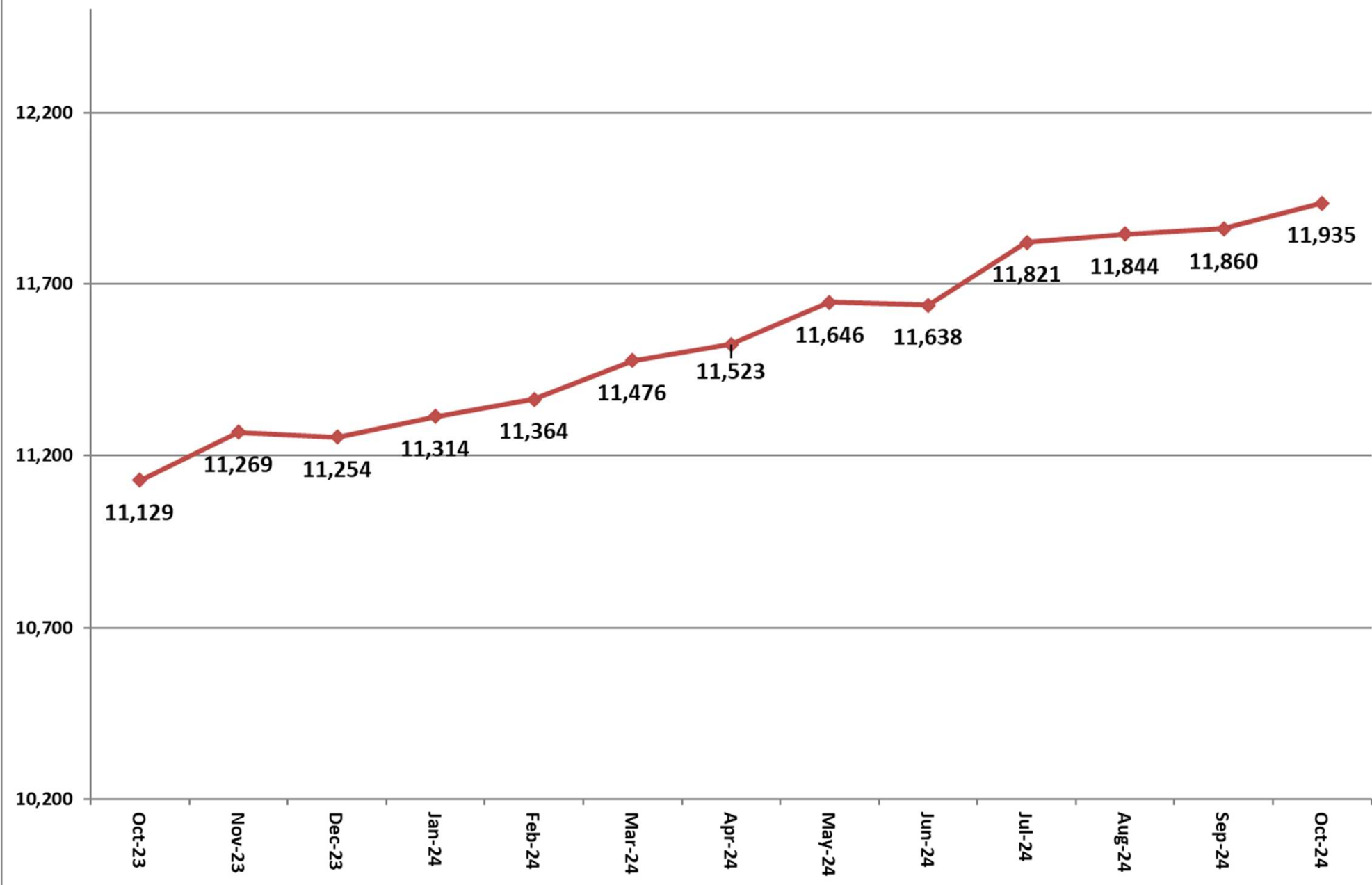


# Inmate Population between October 15, 2023 to October 15, 2024

- Grand Total Actual Inmates
- 22-24 Consensus Forecast
- 24-26 Consensus Forecast

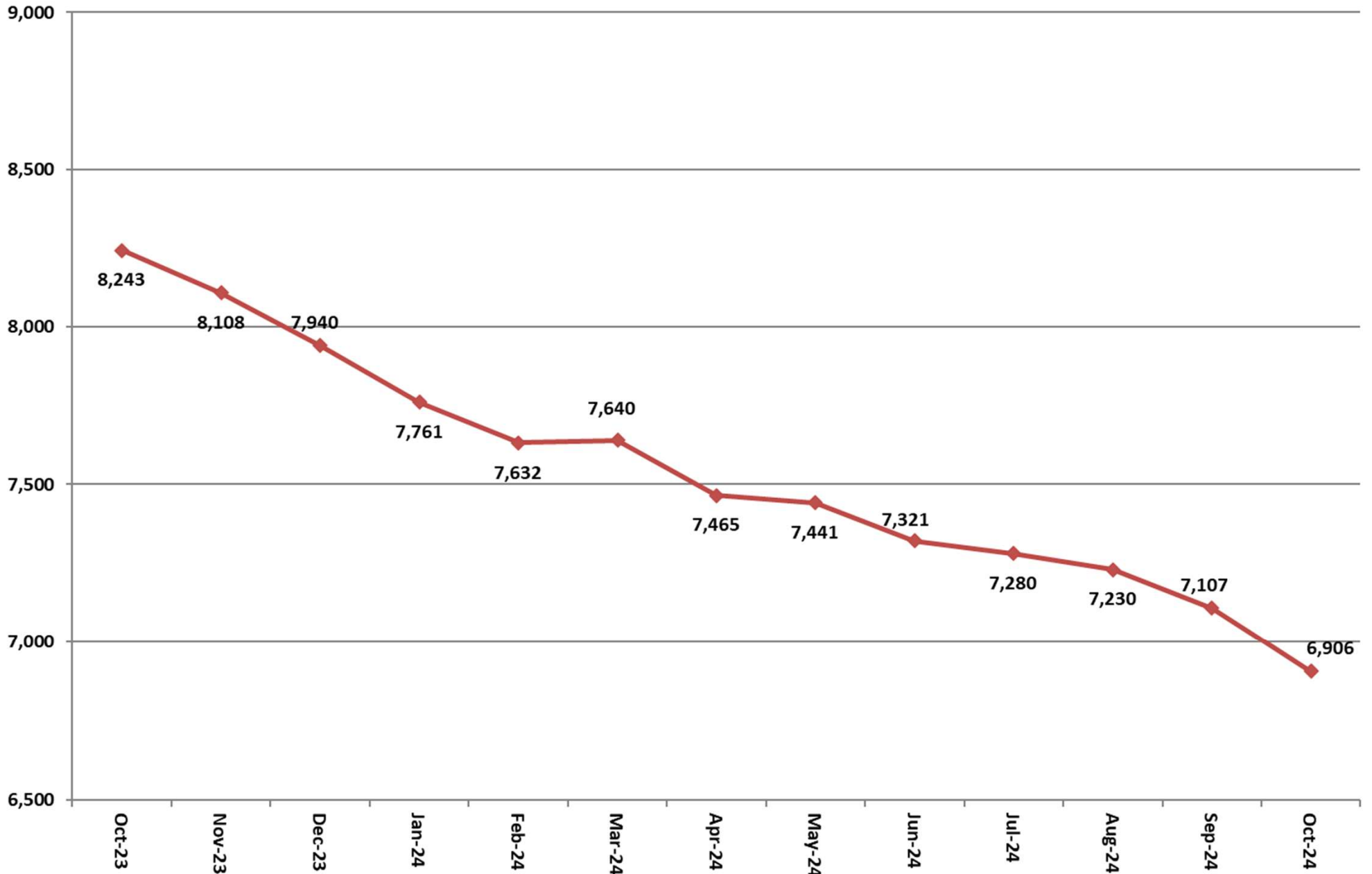


# Total Institutional Daily Count October 15, 2023 to October 15, 2024



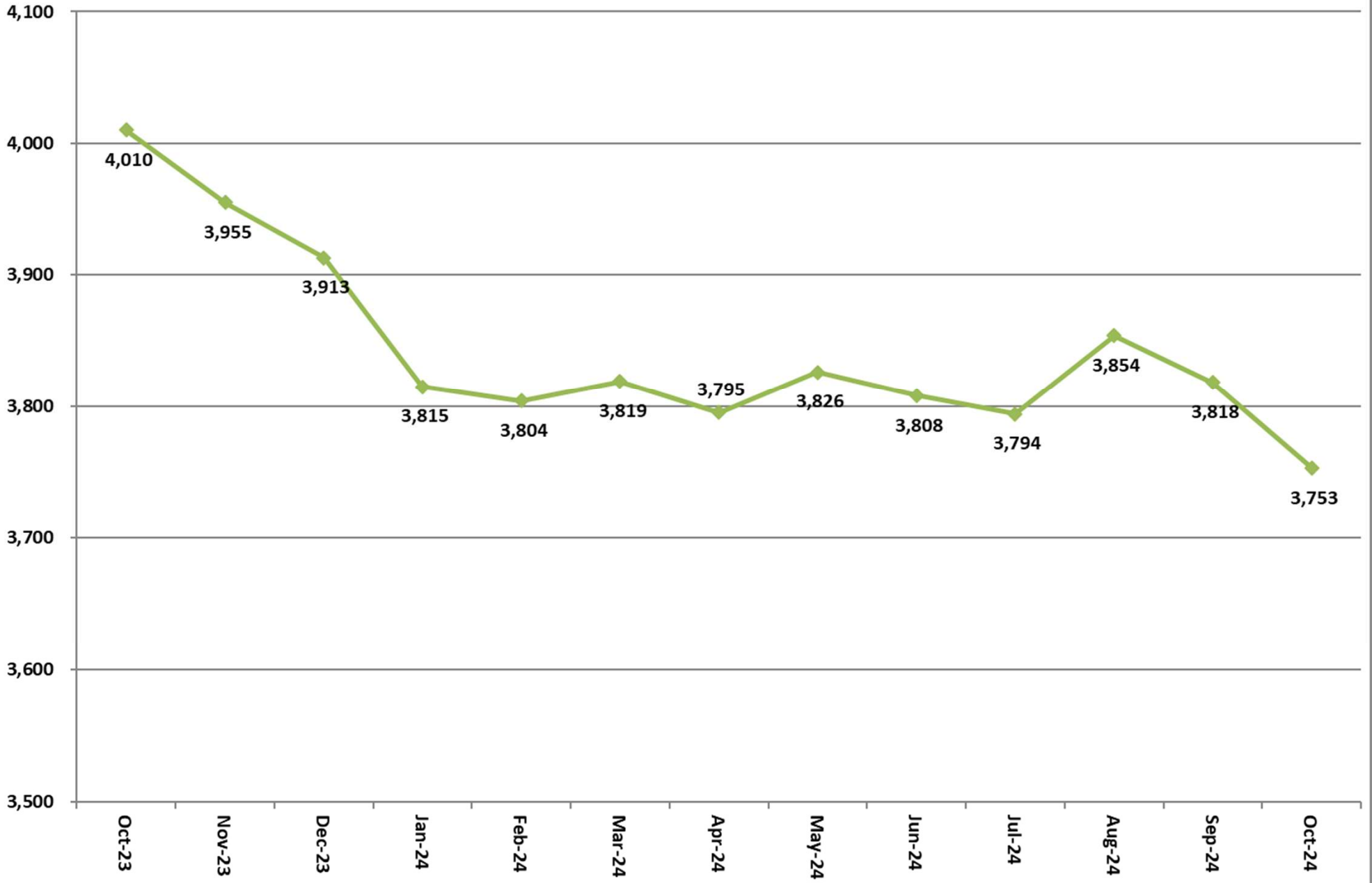
# State Inmates In Jail

## October 15, 2023 to October 15, 2024



# Class D Program

## October 15, 2023 to October 15, 2024



# Controlled Intake

## October 15, 2023 to October 15, 2024

