

# Commonwealth of Kentucky Department of Corrections



## 2012 Annual Report Division of Corrections Training

Director Christopher Kleymeyer

# TABLE OF CONTENTS

Table of Contents.....	2
Mission Statements.....	3
Training Methodology.....	4-5
Department of Corrections Organizational Chart.....	6
Division of Corrections Training Organizational Chart.....	7
Regional Training Site Locations.....	8
Division of Training - Central Office.....	9
Central Region Training Center.....	10
Eastern Region Training Center.....	11
Western Region Training Center.....	12
Division of Training – Curriculum Branch.....	13
Division Staff – Corrections Job Related Experience.....	14
Commitment to Excellence.....	15
Pictorial Review.....	16-18
Yearly Training Statistics – ACA Required.....	19
Class Evaluation Totals Chart.....	20
Individual Class Evaluation Totals Chart.....	21
Crimcast Statistics Chart.....	22
Training Class Evaluations Totals all Region.....	23
CRTC Class Evaluation Totals.....	24
ERTC Class Evaluation Totals.....	25
WRTC Class Evaluation Totals.....	26
Yearly Classroom Activity Report.....	27- 30

## Mission Statements

### **Kentucky Department of Corrections Mission Statement:**

To protect the citizens of the Commonwealth and to provide a safe, secure and humane environment for staff and offenders in carrying out the mandates of the legislative and judicial processes, and to provide opportunities for offenders to acquire skills which facilitate non-criminal behavior.



### **Kentucky Division of Corrections Training Mission Statement:**

To design, develop and deliver training programs that meet the needs and mandates of the employees of the Kentucky Department of Corrections.

*Our Mission...Your Future*



# **TRAINING METHODOLOGY**

## **Correctional Officers**

Currently, a new corrections officer will complete the Corrections Officer Basic Course (COBC) by attending his or her New Employee Orientation (NEO) training at the institution in which he/she was hired. The Institutional Training Coordinator (ITC) oversees the NEO instruction and the Phase I portion of the COBC. The Phase I portion of COBC is equivalent to 40 hours of classroom training delivered by Computer Based Training (CBT) within the institution's computer lab. After completing the NEO and Phase I of COBC at the hiring institution, the trainee will complete Phase II of the COBC at one of the three training centers. Upon completion of NEO, Phase I and Phase II of COBC, the new correctional officer return to his/her hiring institution for the remainder of their eight month probation period. Upon return to their institution the newly trained correctional officer will receive an additional 40 hours of Common Core – Officer In-Service training annually.

## **Probation and Parole Officers**

Currently, a new probation and parole officer completes the Probation and Parole Officer Basic Course (P & PBC) by attending his/her New Employee Orientation at the Probation and Parole Office in which he/she were hired. The Assistant District Supervisor oversees the NEO and Phase I of the P&PBC. The Phase I portion of the P & PBC is equivalent to 40 hours of classroom instruction delivered by (CBT) on the new probation and parole officer's assigned laptop computer. After completing the NEO and Phase I of the P&PBC, the new officer completes Phase II of the P&PBC at the Central Region Training Center. Phase II of the P&PBC consists of one hundred twenty (120) hours of classroom training. Upon completion of the NEO, Phase I and Phase II of the P&PBC, the new officer returns to his/her assigned probation and parole office for the remainder of their six month probation period. Upon return to the district, the newly trained probation and parole officer will receive an additional 40 hours of Probation and Parole In-Service training annually.

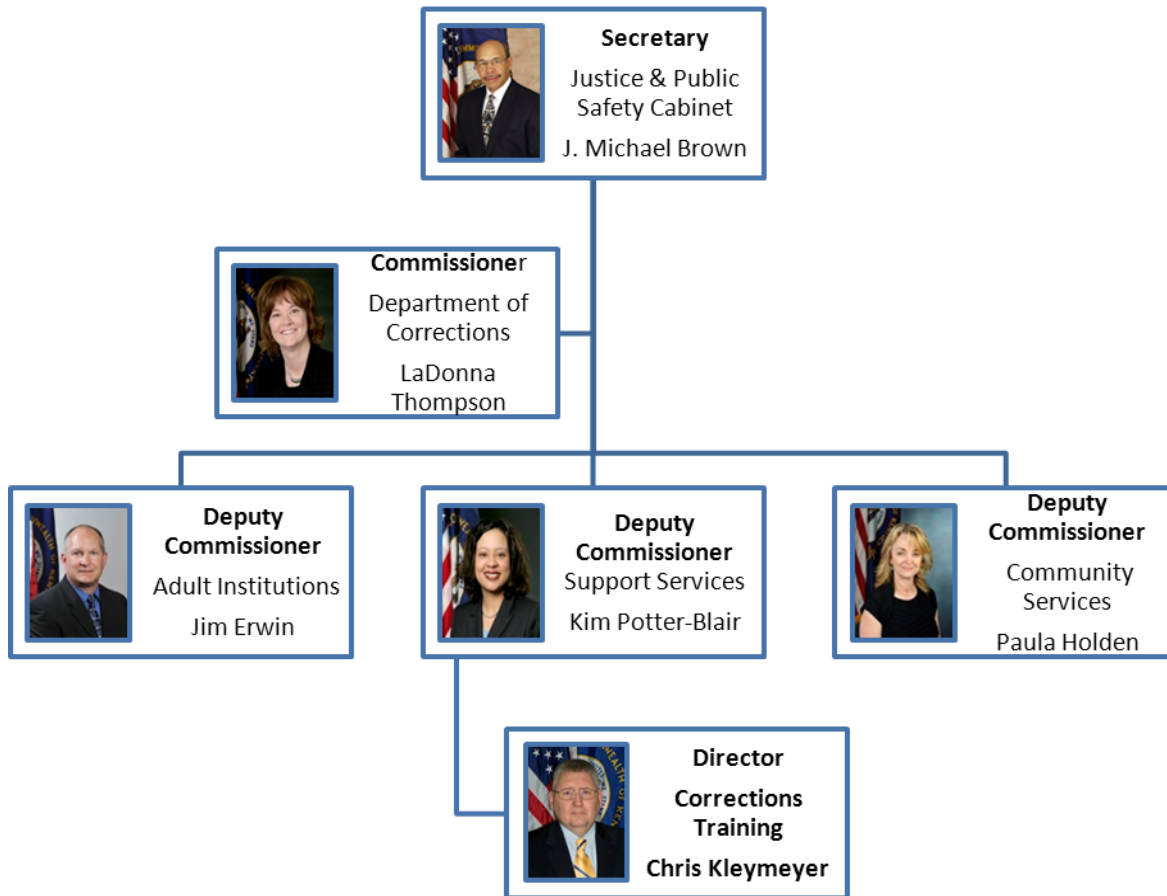
## **Elected County Jailers and their Deputies**

Currently, Kentucky Revised Statutes (KRS) 196.070, Duties of the Commissioner of the Department of Corrections Training Programs, KRS 441.055. Regulation of Jails Adoptions and Revision of Standards and KRS 441.115, Jail Staff Training Program and Jailer's Training Expense Allowance, require the Department of Corrections to provide a minimum of 40 hours of training annually for the elected jailers and 16 hours of training annually for their staff at no cost to the jailers. The DCT develops a curriculum, annually, in cooperation with a curriculum committee appointed by the Kentucky Jailer's Association. The DCT provides the deputy jailer curriculum to county jails for delivery by members of the jailer's staff, who have been trained by the DCT, to act as adjunct instructors. DCT staff from the three regional training centers also conducts numerous iterations of the Annual Deputy Jailer Training throughout the Commonwealth at locations requested by the Kentucky jailers. The deputy jailer (CBT) curriculum is available for any jail staff that needs the training in addition too, or in lieu of, the classroom training. The elected/appointed jailers meet the majority of their 40 hour annual training requirements by attending one or both of the annual Kentucky Jailer's Association Conferences. Additionally, the DCT conducts a forty (40) hour training session for each newly elected jailer each election cycle prior to them assuming their new position.

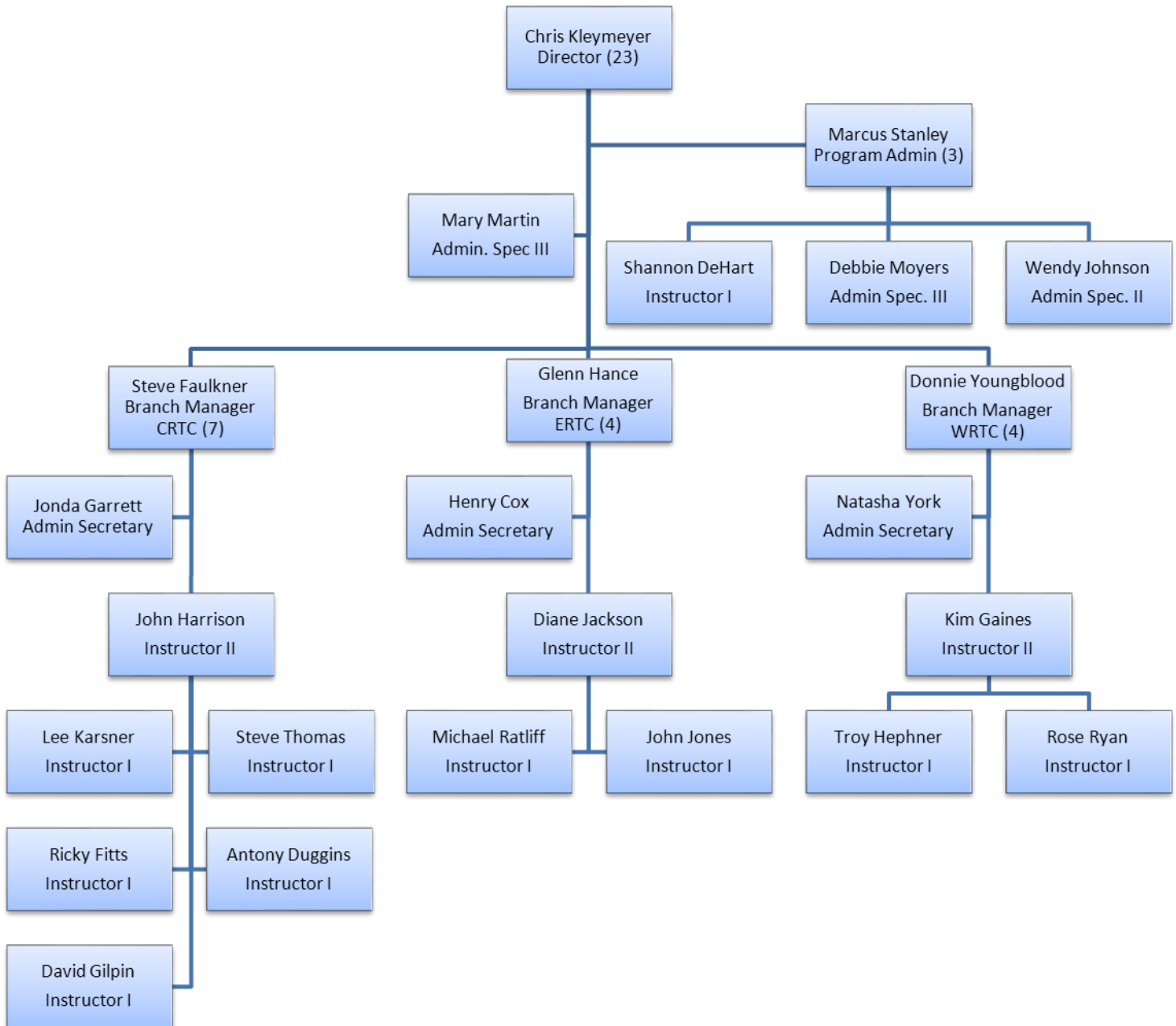
## **Central Office Staff**

The Department of Corrections is currently in the process of gaining Accreditation for Central Office Staff. Previously this group of employees was exempt from the training process. The departments training policy CPP 4.2 is being reviewed and revised to include Central Office Staff in the training process. For 2013 we currently have a 16 hour (16) CBT bundle created for Central Office Support Staff.

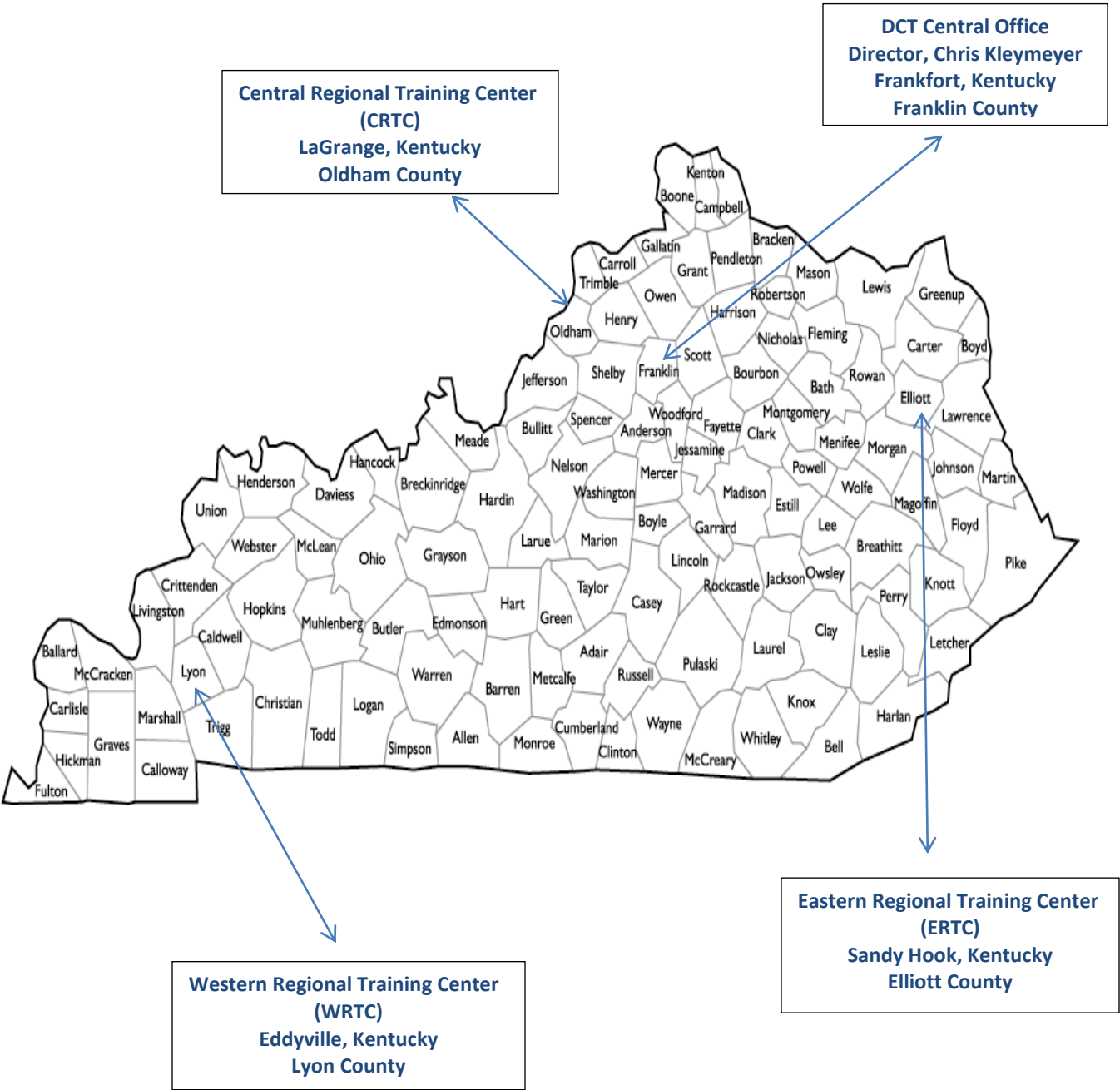
# Department of Corrections Organizational Chart



# Division of Corrections Training Organizational Chart



# Regional Training Site Locations





## Division of Corrections Training – Central Office



The DCT Director, Chris Kleymeyer, maintains one office in Frankfort, Kentucky which provides administrative supervision of all DCT operations. This office is staffed with one Administrative Support Specialist, Mary Martin. This allows the DCT to have a presence in the Department of Corrections Central Office and locates the Director conveniently between the three regional training centers. Our Frankfort Central Office is 56 miles from the CRTC, 112 miles from the ERTC and 221 miles from the WRTC.



## Central Region Training Center



The CRTC is staffed by a Branch Manager, Steve Faulkner; a Senior Training Instructor, John Harrison; five Training Instructors, Lee Karsner, Ricky Fitts, Steve Thomas, Anthony Duggins and David Gilpin; and an Administrative Secretary, Jonda Garrett.

The CRTC provides staff instruction to six adult correctional institutions including Kentucky State Reformatory (KSR), Roederer Correctional Complex (RCC), Luther Luckett Correctional Complex (LLCC), Kentucky Correctional Institution for Women (KCIW), Northpoint Training Center (NTC) and Blackburn Correctional Complex (BCC); twelve Probation and Parole Districts including Districts 4, 5, 6, 7, 9, 12, 14, 16, 17, 18, 19 and 20; and the elected jailers and their staff within fifty-six counties of the Commonwealth in a habitual daily support relationship.

## Eastern Region Training Center



The ERTC is staffed by a Branch Manager, Glenn Hance; a Senior Training Instructor, Diane Jackson; two Training Instructors, Michael Ratliff and John Jones; and an Administrative Secretary, Henry Cox.

The ERTC provides staff instruction to three adult correctional institutions; Little Sandy Correctional Complex (LSCC), Eastern Kentucky Correctional Complex (EKCC) and the Bell County Forestry Camp (BCFC); four Probation and Parole Districts including Districts 8, 10, 11 and 15; and the elected jailers and their staff within twenty-nine counties of the Commonwealth in a habitual daily support relationship.



## Western Region Training Center



The WRTC is staffed by a Branch Manager, Donnie Youngblood; a Senior Training Instructor, Kim Gaines; two Training Instructors, Troy Hephner and Rose Ryan; and an Administrative Secretary, Natasha York.

The WRTC provides staff instruction to three adult correctional institutions; Western Kentucky Correctional Complex (WKCC), Kentucky State Penitentiary (KSP) and Green River Correctional Complex (GRCC); four Probation and Parole Districts including Districts 1, 2, 3 and 13; and the elected jailers and their staff within thirty-six counties of the Commonwealth in a habitual daily support relationship.



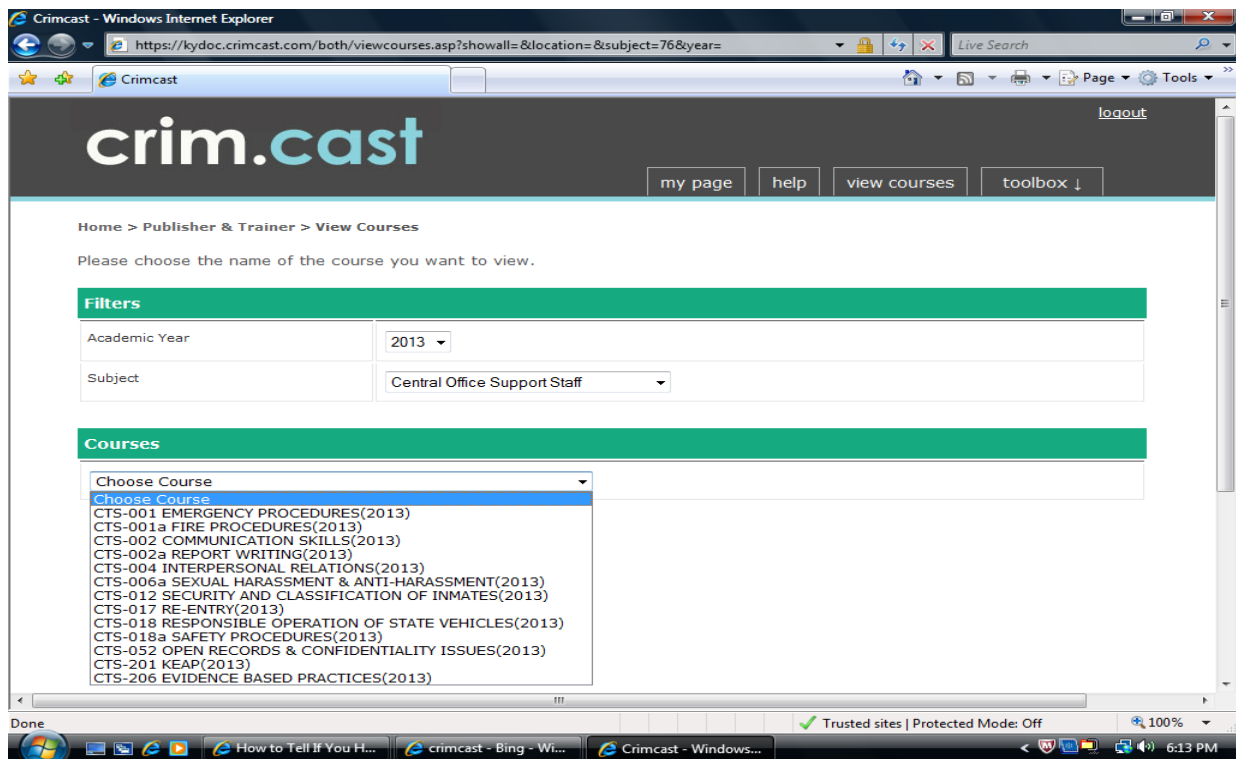
## Curriculum Branch

The Curriculum Development Branch is co-located within the CRTC. They are responsible for management of the curriculum development process, the archiving of all departmental curriculums and the daily administration of the Department of Corrections Learning Management System (LMS).

The Curriculum Branch is also responsible for managing the ACA Files for the division.

The Curriculum Branch is staffed with a Program Manager, Marcus Stanley (CRTC); an Instructor I, Shannon DeHart (CRTC); an Administrative Specialist III, Debbie Moyers (ERTC) who also serves as our ACA Specialist; and an Administrative Specialist II, Wendy Johnson (WRTC).

The Curriculum Development Branch also manages the department's Learning Management System (LMS) CRIMCAST, which also serves as our department's Training Records System (TRS).



## Division Staff Corrections Job Related Experiences

### Law Enforcement, Jails and Prisons

### Years of Services

Staff	Region	DOC	P & P	Federal	County Jail/Sheriff	Private Corrections	Out of State DOC
Chris Kleymeyer	DCT	9		28	3		
Mary Martin	DCT	8 mos					
Steve Faulkner	CRTC	16					
John Harrison	CRTC	23					
Jonda Garrett	CRTC	31					
Lee Karsner	CRTC	10			23		
Steve Thomas	CRTC	12	7	1	3		
Ricky Fitts	CRTC	4.5					
Antony Duggins	CRTC	24					
David Gilpin	CRTC	35				3	
Glenn Hance	ERTC	25					
Diane Lambert	ERTC	14					
Henry Cox	ERTC	1.5					
Michael Ratliff	ERTC	5.5					
John Jones	ERTC	6 mos		25			
Donnie Youngblood	WRTC	11	20				
Kim Gaines	WRTC	13					
Natasha York	WRTC	2.5					
Troy Hephner	WRTC	17			6		
Rose Ryan	WRTC	23.5					
Marcus Stanley	Curr. Branch	13				4	11
Shannon DeHart	Curr. Branch	8					
Debbie Moyers	Curr. Branch	22					
Wendy Johnson	Curr. Branch	2					

### Average Years of Kentucky DOC Experience per Region

Central Region Training Center				19.4	YEARS		
Eastern Region Training Center				11.5	YEARS		
Western Region Training Center				13.4	YEARS		
Curriculum Branch				11.25	YEARS		



## Commitment to Excellence

The Division of Corrections Training (DCT) is charged with planning, coordinating and conducting training for three diverse populations as well as the Department of Corrections Central Office.

The DCT develops the majority of the new employee and continuing education curriculum for the Correctional Officers and staff of the twelve adult Kentucky correctional institutions, the Probation and Parole Officers and staff of the nineteen Probation and Parole Districts and annual training for the elected Jailers and their staff within all one hundred twenty counties of Kentucky.

Having achieved ACA accreditation in 2011 and maintaining that accreditation is a source of pride for our Division and the Department of Corrections.



## Looking Back.....









**Looking Forward .....**

## **Yearly Training Statistics**

On the following pages you will find the yearly training statistics depicted in chart form and statistical breakdowns for ACA purposes.

### **Administration of Correctional Agencies**

#### **2-CO-1D-03**

The agency's training plan provides for ongoing evaluation of all pre-service, in-service, and specialized training programs. A written report is prepared annually.

### **Probation and Parole – Field Services**

#### **4-APPFS-3A-19**

The agency provides an ongoing formal evaluation of all pre-service, in-service and specialized training programs, and completes an annual written evaluation report.

### **Adult Correctional Institutions**

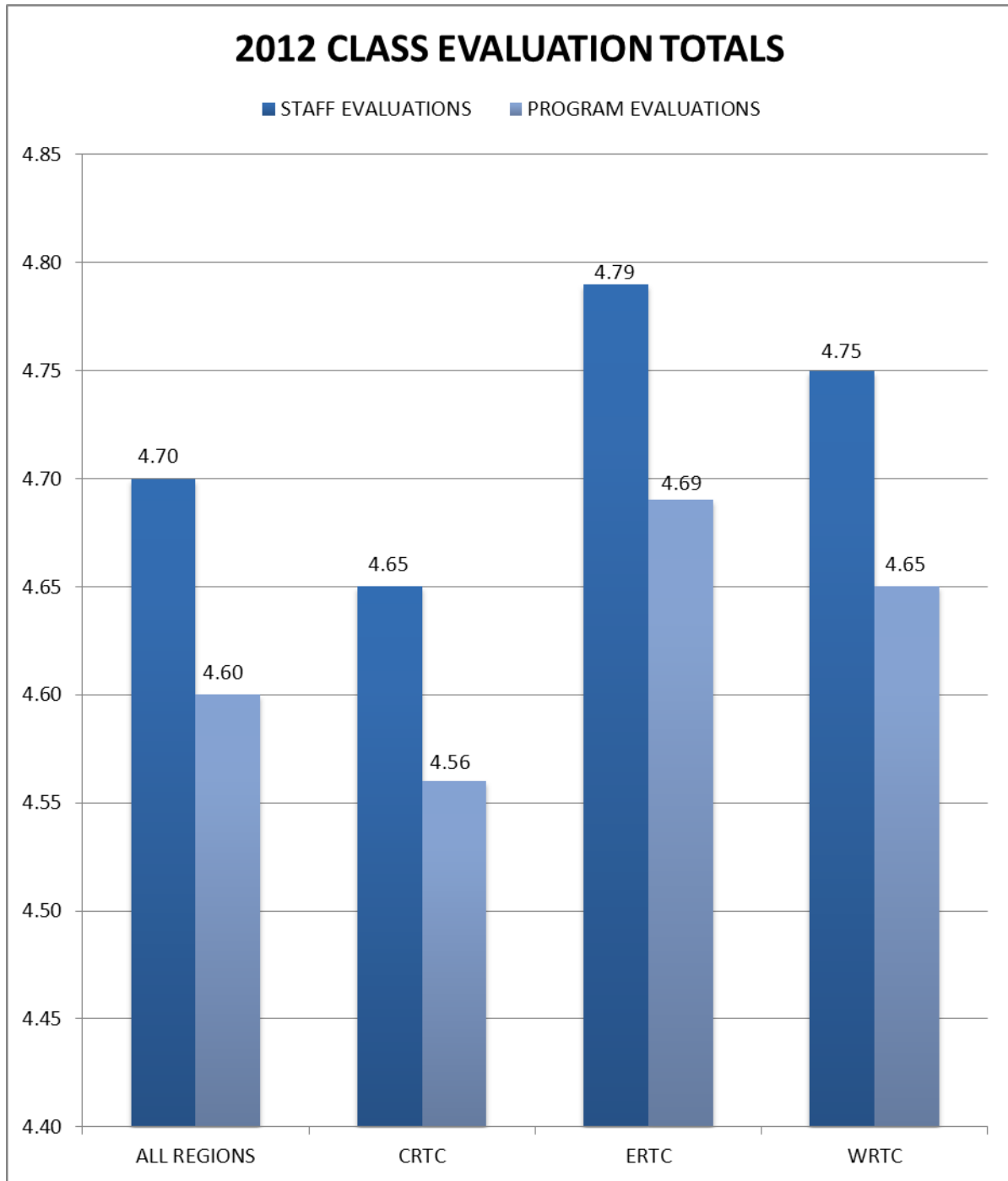
#### **4-4077**

The institution's training plan provides for ongoing formal evaluation of all pre-service, in-service, and specialized training programs. A written report is prepared annually.

### **Correctional Training Academies**

#### **1-CTA-3A-06**

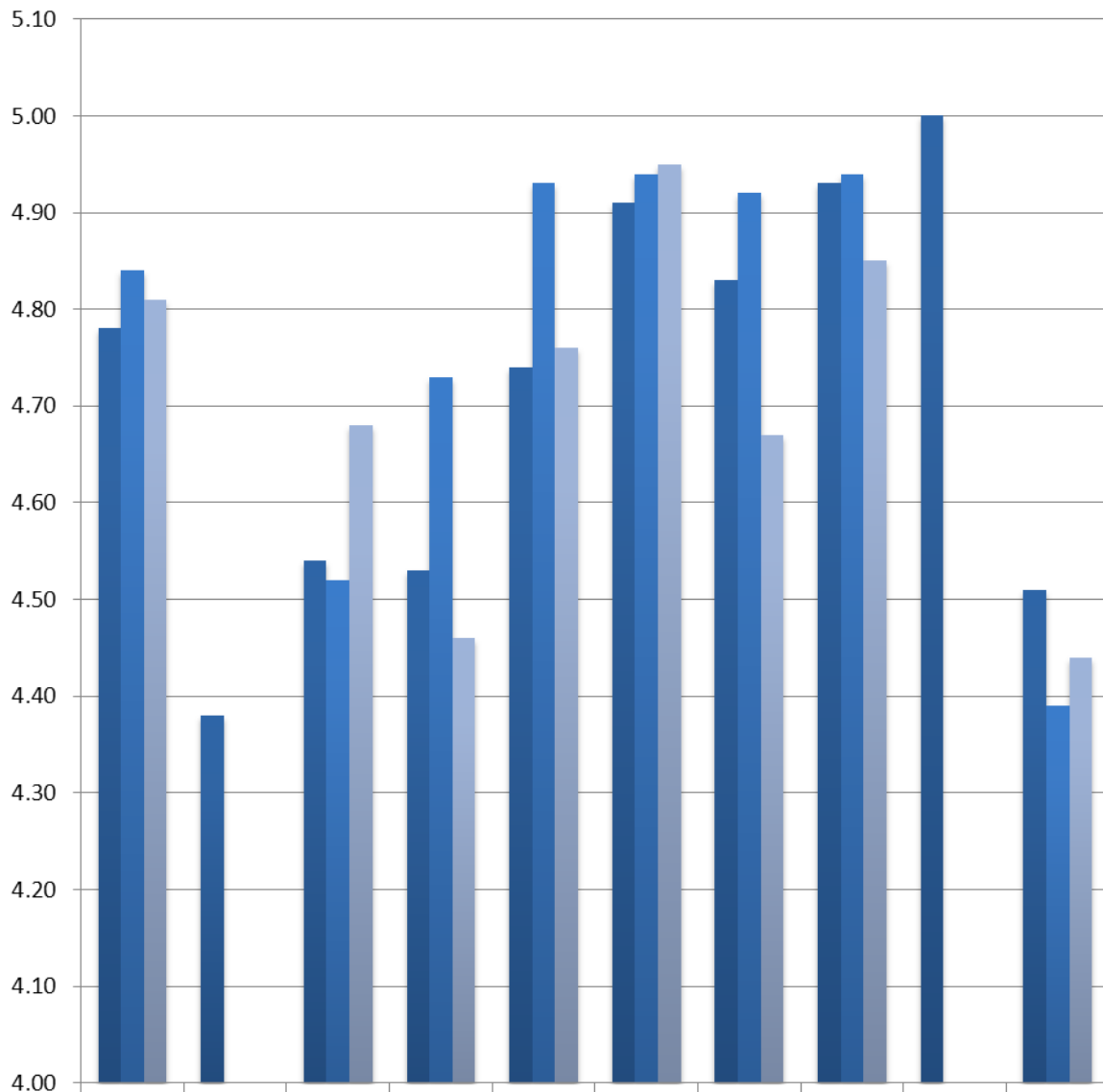
Written policy, procedure, and practice provide for ongoing formal evaluation of all pre-service, in-service, and specialized training programs conducted by the academy. A written report is prepared annually and includes input from operational units.



Evaluations reflect scoring by training participants at the completion of their training. These evaluations are based on a scale of 5 being excellent and 1 being poor. The participants are asked to evaluate the training that was conducted by the DCT staff and the total program curriculum. The following charts reflect those totals and averages for each training center and each program of instruction.

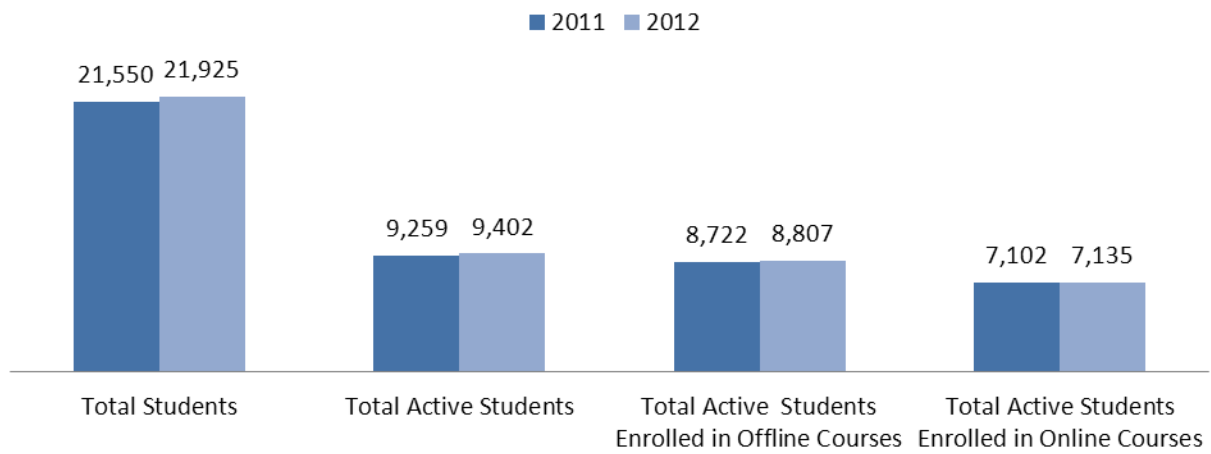
## 2012 INDIVIDUAL CLASS EVALUATIONS

■ CRTC ■ ERTC ■ WRTC

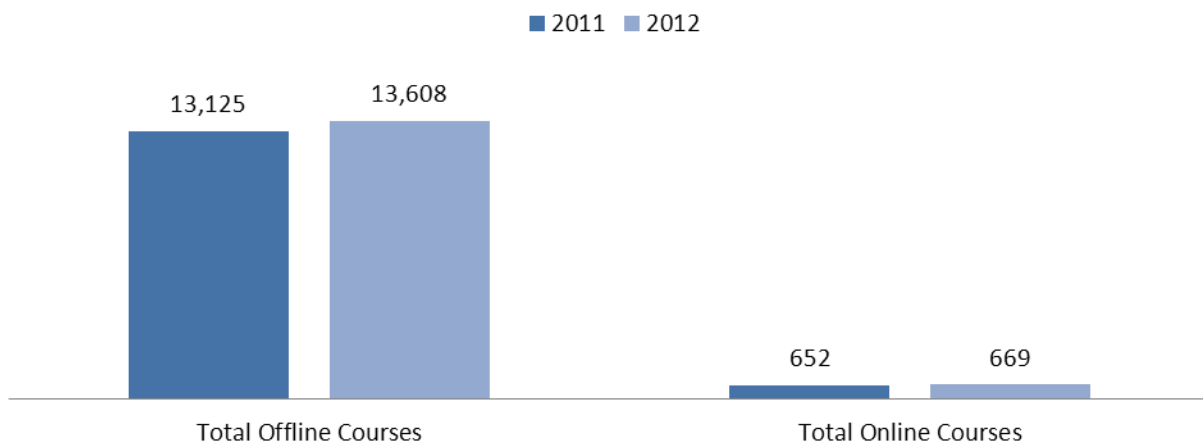


	COBC	P&P BC	P&P IN-SERVICE	BSC	DEPUTY JAILER IN-SERVICE	FIREARMS COURSE S	TRAIN THE TRAINER	LESS THAN LETHAL	CERT	SPECIAL TRAININ G
■ CRTC	4.78	4.38	4.54	4.53	4.74	4.91	4.83	4.93	5.00	4.51
■ ERTC	4.84		4.52	4.73	4.93	4.94	4.92	4.94		4.39
■ WRTC	4.81		4.68	4.46	4.76	4.95	4.67	4.85		4.44

## Crimcast Student User Totals



## Crimcast Offline/Online Course Data





**2012**

## *Total Class Evaluation Averages*

### **Central Region Training Center**

<b>Training Done By Staff</b>	
<i>Total # of Evals</i>	<i>Total Score</i>
<b>3229</b>	<b>15026</b>

*Totals Averaged  
YTD*

**4.65**

<b>Total Program Evaluation</b>	
<i>Total # of Evals</i>	<i>Total Score</i>
<b>3229</b>	<b>14719</b>

*Totals Averaged  
YTD*

**4.56**

### **Eastern Region Training Center**

<b>Training Done By Staff</b>	
<i>Total # of Evals</i>	<i>Total Score</i>
<b>733</b>	<b>3513</b>

*Totals Averaged  
YTD*

**4.79**

<b>Total Program Evaluation</b>	
<i>Total # of Evals</i>	<i>Total Score</i>
<b>733</b>	<b>3439</b>

*Totals Averaged  
YTD*

**4.69**

### **Western Region Training Center**



<b>Training Done By Staff</b>	
<b>Total # of Evals</b>	<b>Total Score</b>
<b>1128</b>	<b>5361</b>

**Totals Averaged  
YTD**

**4.75**

<b>Total Program Evaluation</b>	
<b>Total # of Evals</b>	<b>Total Score</b>
<b>1128</b>	<b>5246</b>

**Totals Averaged  
YTD**

**4.65**

### **Year To Date Class Evaluation Totals**

<b>Training Done By Staff</b>	
<b>Total # of Evals</b>	<b>Total Score</b>
<b>5090</b>	<b>23900</b>

**Totals Averaged  
YTD**

**4.70**

<b>Total Program Evaluation</b>	
<b>Total # of Evals</b>	<b>Total Score</b>
<b>5090</b>	<b>23404</b>

**Totals Averaged  
YTD**

**4.60**



**2012**  
**Individual Class Evaluation Averages**

**Central Region Training Center**

Training Done By Staff		Total Program Evaluation	
CO Basic Course			
Total # of Evals	Total Score	Total # of Evals	Total Score
1303	6222	1303	6112
Totals Averaged YTD	4.78	Totals Averaged YTD	4.69
P&P Basic Course			
Total # of Evals	Total Score	Total # of Evals	Total Score
338	1481	338	1414
Totals Averaged YTD	4.38	Totals Averaged YTD	4.18
P&P Basic Inservice			
Total # of Evals	Total Score	Total # of Evals	Total Score
220	998	220	931
Totals Averaged YTD	4.54	Totals Averaged YTD	4.23
Basic Supervisors Course			
Total # of Evals	Total Score	Total # of Evals	Total Score
32	145	32	145
Totals Averaged YTD	4.53	Totals Averaged YTD	4.44
Deputy Jailer			
Total # of Evals	Total Score	Total # of Evals	Total Score
168	796	168	763
Totals Averaged YTD	4.74	Totals Averaged YTD	4.54
Firearms			
Total # of Evals	Total Score	Total # of Evals	Total Score
78	383	78	380
Totals Averaged YTD	4.91	Totals Averaged YTD	4.87
Train the Trainer Course			
Total # of Evals	Total Score	Total # of Evals	Total Score
42	205	42	203
Totals Averaged YTD	4.83	Totals Averaged YTD	4.83
Less Than Lethal			
Total # of Evals	Total Score	Total # of Evals	Total Score
161	793	161	794
Totals Averaged YTD	4.93	Totals Averaged YTD	4.93
CERT			
Total # of Evals	Total Score	Total # of Evals	Total Score
10	50	10	50
Totals Averaged YTD	5.00	Totals Averaged YTD	5.00
Program Reviews			
Total # of Evals	Total Score	Total # of Evals	Total Score
11	51	11	49
Totals Averaged YTD	4.64	Totals Averaged YTD	4.45
Specialized Classes			
Total # of Evals	Total Score	Total # of Evals	Total Score
866	3902	866	3881
Totals Averaged YTD	4.51	Totals Averaged YTD	4.48

**2012**  
**Individual Class Evaluation Averages**  
**Eastern Region Training Center**

Training Done By Staff		Total Program Evaluation	
CO Basic Course			
Total # of Evals	Total Score	Total # of Evals	Total Score
297	1437	297	1429
Totals Averaged YTD	4.84	Totals Averaged YTD	4.81
P&P Basic Course			
Total # of Evals	Total Score	Total # of Evals	Total Score
0	0	0	0
Totals Averaged YTD	█ #DIV/0!	Totals Averaged YTD	█ #DIV/0!
P&P Basic Inservice			
Total # of Evals	Total Score	Total # of Evals	Total Score
77	348	77	304
Totals Averaged YTD	4.52	Totals Averaged YTD	3.95
Basic Supervisors Course			
Total # of Evals	Total Score	Total # of Evals	Total Score
22	104	22	97
Totals Averaged YTD	4.73	Totals Averaged YTD	4.41
Deputy Jailer			
Total # of Evals	Total Score	Total # of Evals	Total Score
182	898	182	887
Totals Averaged YTD	4.93	Totals Averaged YTD	4.87
Firearms			
Total # of Evals	Total Score	Total # of Evals	Total Score
52	257	52	257
Totals Averaged YTD	4.94	Totals Averaged YTD	4.94
Train the Trainer Course			
Total # of Evals	Total Score	Total # of Evals	Total Score
13	64	13	64
Totals Averaged YTD	4.92	Totals Averaged YTD	4.92
Less Than Lethal			
Total # of Evals	Total Score	Total # of Evals	Total Score
18	89	18	89
Totals Averaged YTD	4.94	Totals Averaged YTD	4.94
CERT			
Total # of Evals	Total Score	Total # of Evals	Total Score
0	0	0	0
Totals Averaged YTD	█ #DIV/0!	Totals Averaged YTD	█ #DIV/0!
Program Reviews			
Total # of Evals	Total Score	Total # of Evals	Total Score
0	0.00	0	0.00
Totals Averaged YTD	█ #DIV/0!	Totals Averaged YTD	█ #DIV/0!
Specialized Classes			
Total # of Evals	Total Score	Total # of Evals	Total Score
72	316	72	312
Totals Averaged YTD	4.39	Totals Averaged YTD	4.33

**2012**  
**Individual Class Evaluation Averages**  
**Western Region Training Center**

Training Done By Staff		Total Program Evaluation	
CO Basic Course			
Total # of Evals	Total Score	Total # of Evals	Total Score
425	2045	425	2014
Totals Averaged YTD	4.81	Totals Averaged YTD	4.74
P&P Basic Course			
Total # of Evals	Total Score	Total # of Evals	Total Score
0	0.00	0	0.00
Totals Averaged YTD	█ #DIV/0!	Totals Averaged YTD	█ #DIV/0!
P&P Basic Inservice			
Total # of Evals	Total Score	Total # of Evals	Total Score
104	487	104	469
Totals Averaged YTD	4.68	Totals Averaged YTD	4.51
Basic Supervisors Course			
Total # of Evals	Total Score	Total # of Evals	Total Score
13	58	13	56
Totals Averaged YTD	4.46	Totals Averaged YTD	4.31
Deputy Jailer			
Total # of Evals	Total Score	Total # of Evals	Total Score
314	1494	314	1458
Totals Averaged YTD	4.76	Totals Averaged YTD	4.64
Firearms			
Total # of Evals	Total Score	Total # of Evals	Total Score
21	104	21	104
Totals Averaged YTD	4.95	Totals Averaged YTD	4.95
Train the Trainer Course			
Total # of Evals	Total Score	Total # of Evals	Total Score
9	42	9	42
Totals Averaged YTD	4.67	Totals Averaged YTD	4.67
Less Than Lethal			
Total # of Evals	Total Score	Total # of Evals	Total Score
75	364	75	359
Totals Averaged YTD	4.85	Totals Averaged YTD	4.79
CERT			
Total # of Evals	Total Score	Total # of Evals	Total Score
0	0	0	0
Totals Averaged YTD	█ #DIV/0!	Totals Averaged YTD	█ #DIV/0!
Program Reviews			
Total # of Evals	Total Score	Total # of Evals	Total Score
0	0	0	0
Totals Averaged YTD	█ #DIV/0!	Totals Averaged YTD	█ #DIV/0!
Specialized Classes			
Total # of Evals	Total Score	Total # of Evals	Total Score
63	280	63	275
Totals Averaged YTD	4.44	Totals Averaged YTD	4.37

**Division of Corrections Training**  
**Classroom Activity 2012 Yearly Report**

	CRTC				ERTC				WRTC				TOTAL			
	# x's Taught	# of Student	# House d	# of Instr. Hrs.	# x's Taught	# of Student	# House d	# of Instr. Hrs.	# x's Taught	# of Student	# House d	# of Instr. Hrs.	# x's Taught	# of Student	# House d	# of Instr. Hrs.
<b>40 Hour Classes</b>	<b>40 Hour Classes</b>				<b>40 Hour Classes</b>				<b>40 Hour Classes</b>				<b>40 Hour Classes</b>			
COBC Week 1	10	573	125	400	6	146	19	240	7	171	10	240	23	890	154	880
COBC Week 2	10	444	110	400	6	123	14	280	7	169	7	280	23	736	131	960
COBC Week 3	10	381	101	360	6	107	14	240	7	156	6	280	23	644	121	880
P&P Basic Week 1	4	106	54	160	0	0	0	0	0	0	0	0	4	106	54	160
P&P Basic Week 2	4	126	71	160	0	0	0	0	0	0	0	0	4	126	71	160
P&P Basic Week 3	4	97	57	160	0	0	0	0	0	0	0	0	4	97	57	160
Basic Deputy Jailer Training	0	0	0	0	0	0	0	0	0	0	0	0	0	0	0	0
Basic Supervisors Course	2	38	1	80	1	12	0	40	2	14	0	80	5	64	1	200
CERT Basic	0	0	0	0	0	0	0	0	1	76	0	40	1	76	0	40
Chemical Agents - Instructor	1	44	0	40	0	0	0	0	0	0	0	0	1	44	0	40
FA Revolver/Shotgun Instr.	1	11	0	40	1	13	0	40	0	0	0	0	2	24	0	80
FA Rifle Instructor	1	9	2	40	2	14	0	80	0	0	0	0	3	23	2	120
FA Semi Auto Instructor	1	8	0	40	1	5	0	40	1	10	0	40	3	23	0	120
Hostage Negotiation Training	1	25	0	40	0	0	0	0	0	0	0	0	1	25	0	40
Jail CERT	1	10	0	40	0	0	0	0	0	0	0	0	1	10	0	40
Joint CERT	0	0	0	0	0	0	0	0	0	0	0	0	0	0	0	0
New Employee Orientation	0	0	0	0	0	0	0	0	0	0	0	0	0	0	0	0
Train-the-Trainer	1	17	1	40	1	13	4	40	1	9	0	40	3	39	5	120
TTT - LSCMI	1	21	0	32	0	0	0	0	0	0	0	0	1	21	0	32
TTT Standard First Aid	1	8	0	32	0	0	0	0	1	8	2	40	2	16	2	72
<b>16 Hour Classes</b>	<b>16 Hour Classes</b>				<b>16 Hour Classes</b>				<b>16 Hour Classes</b>				<b>16 Hour Classes</b>			
24/7 Dads	1	26	0	16	0	0	0	0	0	0	0	0	1	26	0	16
Common Core	0	0	0	0	0	0	0	0	0	0	0	0	0	0	0	0
Defensive Tactics - Instructor	2	15	2	32	1	5	0	16	0	0	0	0	3	20	2	48
Deputy Jailer - Supv Course	0	0	0	0	0	0	0	0	0	0	0	0	0	0	0	0
Deputy Jailer In-Service	10	190	0	160	18	191	0	288	12	235	0	192	40	616	0	640
Leadership Program KSR/RCC	0	0	0	0	0	0	0	0	0	0	0	0	0	0	0	0
NOVA Stun Shield RACC Belt	0	0	0	0	0	0	0	0	0	0	0	0	0	0	0	0
Officer In-Service	1	27	0	16	0	0	0	0	0	0	0	0	1	27	0	16
Pepperball Inst. Armorer	1	23	3	16	0	0	0	0	0	0	0	0	1	23	3	16
Probation & Parole In-Service	11	299	35	176	4	85	41	64	5	135	0	80	20	519	76	320
TASER Instructor Course	1	29	20	16	0	0	0	0	1	15	0	16	2	44	20	32
TTT Motivational Interview	0	0	0	0	0	0	0	0	0	0	0	0	0	0	0	0
<b>8 Hour Classes</b>	<b>8 Hour Classes</b>				<b>8 Hour Classes</b>				<b>8 Hour Classes</b>				<b>8 Hour Classes</b>			
Chemical Agents	0	0	0	0	0	0	0	0	2	38	0	16	2	38	0	16
Classification Training	5	113	0	40	1	19	0	8	1	22	0	8	7	154	0	56
Corrections Professionals	0	0	0	0	0	0	0	0	0	0	0	0	0	0	0	0
Evaluation Training	0	0	0	0	0	0	0	0	1	7	0	4	1	7	0	4
FA Instructor Re-Qualification	8	80	0	64	7	38	3	56	5	18	0	36	20	136	3	156
Haz Mat Operations Level	0	0	0	0	1	41	0	8	1	23	0	8	2	64	0	16

**Division of Corrections Training**  
**Classroom Activity 2012 Yearly Report**

8 Hour Classes cont.	8 Hour Classes cont.				8 Hour Classes cont.				8 Hour Classes cont.				8 Hour Classes cont.			
Management Training	0	0	0	0	0	0	0	0	0	0	0	0	0	0	0	0
Men. Health & Sub. Abuse	2	63	0	18	0	0	0	0	0	0	0	0	2	63	0	18
Motivational Interview Trng	3	81	10	56	0	0	0	0	1	21	0	40	4	102	10	96
Offender Information	2	65	10	48	1	9	0	7	1	22	0	40	4	96	10	95
Pepperball - End User	0	0	0	0	0	0	0	0	0	0	0	0	0	0	0	0
SFA/CPR/AED	2	7	0	13	2	16	0	13	0	0	0	0	4	23	0	26
TASER - End User	3	24	0	16	0	0	0	0	3	16	0	16	6	40	0	32
Working w/Female Offenders	0	0	0	0	0	0	0	0	0	0	0	0	0	0	0	0
4 Hour Classes	4 Hour Classes				4 Hour Classes				4 Hour Classes				4 Hour Classes			
Classification Training	0	0	0	0	0	0	0	0	1	16	0	4	1	16	0	4
Crimcast Administrator Course	1	15	0	3	0	0	0	0	0	0	0	0	1	15	0	3
Employ Relations & Discp.	2	192	0	8	2	47	0	8	0	0	0	0	4	239	0	16
NOVA RACC Belt	1	21	0	4	0	0	0	0	1	8	0	12	2	29	0	16
OC / Pepper Spray End User	1	8	0	4	0	0	0	0	0	0	0	0	1	8	0	4
Performance Matters	2	19	0	10	1	5	0	4	0	0	0	0	3	24	0	14
PREA	0	0	0	0	0	0	0	0	0	0	0	0	0	0	0	0
Program Reviews	1	19	0	2	1	5	0	4	0	0	0	0	2	24	0	6
Substance Abuse Training	1	8	0	4	0	0	0	0	0	0	0	0	1	8	0	4
TASER - End User Re-Cert.	4	42	0	16	1	14	0	4	6	117	0	24	11	173	0	44
2 Hour Classes	2 Hour Classes				2 Hour Classes				2 Hour Classes				2 Hour Classes			
Drug Awareness	0	0	0	0	0	0	0	0	0	0	0	0	0	0	0	0
ARC Flash Training	0	0	0	0	0	0	0	0	0	0	0	0	0	0	0	0
Capital Construction Meeting	0	0	0	0	0	0	0	0	0	0	0	0	0	0	0	0
Flame Resistant Clothing	0	0	0	0	0	0	0	0	0	0	0	0	0	0	0	0
Legal Issues	0	0	0	0	0	0	0	0	1	42	0	2	1	42	0	2
Needs Assessment	0	0	0	0	1	11	0	2	0	0	0	0	1	11	0	2
Open Records	1	104	0	1.5	1	39	0	1.5	0	0	0	0	2	143	0	3
Records Retention Class	0	0	0	0	0	0	0	0	0	0	0	0	0	0	0	0
Misc. Classes	Misc. Classes				Misc. Classes				Misc. Classes				Misc. Classes			
Chaplains Meeting	1	19	0	5	0	0	0	0	0	0	0	0	1	19	0	5
CMP Training	0	0	0	0	0	0	0	0	2	39	0	8	2	39	0	8
Promising Victim Prac in P&P	1	37	0	16	0	0	0	0	0	0	0	0	1	37	0	16
HNT CIM Trng	1	38	0	4	0	0	0	0	0	0	0	0	1	38	0	4
Thinking for a Change	1	7	0	32	0	0	0	0	0	0	0	0	1	7	0	32
Ruger Armorer's Course	1	23	0	32	0	0	0	0	0	0	0	0	1	23	0	32
Probation & Parole Assist. Sup.	1	19	0	16	0	0	0	0	0	0	0	0	1	19	0	16
Involuntary Psych Medication	1	23	0	2	0	0	0	0	0	0	0	0	1	23	0	2
Pathfinders	1	32	0	16	0	0	0	0	0	0	0	0	1	32	0	16
Joint CERT	1	124	0	16	0	0	0	0	0	0	0	0	1	124	0	16
Sex Offender Officer Training	1	45	0	8	0	0	0	0	0	0	0	0	1	45	0	8

**Division of Corrections Training**  
**Classroom Activity 2012 Yearly Report**

<i>Misc. Classes cont.</i>	<i>Misc. Classes cont.</i>				<i>Misc. Classes cont.</i>				<i>Misc. Classes cont.</i>				<i>Misc. Classes cont.</i>			
Crimcast Admin. Course	0	0	0	0	1	2	0	4	0	0	0	0	1	2	0	4
Moral Reconation Training	1	24	0	32	0	0	0	0	0	0	0	0	1	24	0	32
LS/CMI	1	16	0	32	0	0	0	0	0	0	0	0	1	16	0	32
Joint CERT	1	142	0	16	0	0	0	0	0	0	0	0	1	142	0	16
Making it Matter - E-Learner	0	0	0	0	1	4	0	1	0	0	0	0	1	4	0	1
Moral Reconation Training	0	0	0	0	1	5	12	32	0	0	0	0	1	5	12	32
Thinking for a Change P & P	1	13	0	32	0	0	0	0	0	0	0	0	1	13	0	32
Employee Eval. Trng. System	1	10	0	4	0	0	0	0	0	0	0	0	1	10	0	4
Less Than Lethal Instructor	1	3	0	32	0	0	0	0	0	0	0	0	1	3	0	32
OC Aerosol Projectors Instructor Course	1	5	0	8	0	0	0	0	1	6	0	8	2	11	0	16
Milo	0	0	0	0	2	42	0	8	0	0	0	0	2	42	0	8



**Division of Corrections Training**  
**Classroom Activity 2012 Yearly Report**

**Number Of Students By Inst./District**

INST/DIST	CRTC	ERTC	WRTC	TOTAL
BCC	171	16	2	189
BCFC	45	11	0	56
EKCC	60	342	5	407
GRCC	40	0	184	224
KCIW	425	0	8	433
KSP	50	0	342	392
KSR	684	0	10	694
LSCC	64	214	7	285
LLCC	380	0	12	392
NTC	297	48	49	394
RCC	309	0	9	318
WKCC	35	0	262	297
P&P D-1	12	0	87	99
P&P D-2	28	0	42	70
P&P D-3	30	0	16	46
P&P D-4	36	0	0	36
P&P D-5	60	0	1	61
P&P D-6	36	1	0	37
P&P D-7	67	0	0	67
P&P D-8	23	26	0	49
P&P D-9	66	0	0	66
P&P D-10	25	30	0	55
P&P D-11	26	30	0	56
P&P D-12	37	0	0	37
P&P D-13	26	0	4	30
P&P D-14	34	0	0	34
P&P D-15	16	35	0	51
P&P D-16	53	1	0	54
P&P D-17	52	0	0	52
P&P D-18	66	0	0	66
P&P D-19	55	0	0	55
P&P D-20	50	3	0	53
Corr. Trng	54	3	2	59
Cen. Off.	54	3	2	59
KCI	61	15	4	80
Priv. Inst.	44	8	0	52
Jails	206	149	219	574
Other	81	83	102	266
<b>TOTALS</b>	<b>3858</b>	<b>1018</b>	<b>1369</b>	<b>6245</b>

**Total Training Hours**

<b>Totals:</b>	<b>CRTC</b>			
40 Hour Classes	53	1918	522	2064
16 Hour Classes	27	609	60	432
8 Hour Classes	25	433	20	255
4 Hour Classes	13	324	0	51
2 Hour Classes	1	104	0	1.5
Misc. Classes	17	580	0	303
<b>Totals:</b>	<b>136</b>	<b>3968</b>	<b>602</b>	<b>3107</b>
40 Hour Training Blocks	<b>77.66</b>			
<b>Totals:</b>	<b>ERTC</b>			
40 Hour Classes	24	433	51	1000
16 Hour Classes	23	281	41	368
8 Hour Classes	12	123	3	92
4 Hour Classes	5	71	0	20
2 Hour Classes	2	50	0	3.5
Misc. Classes	5	53	12	45
<b>Totals:</b>	<b>71</b>	<b>1011</b>	<b>107</b>	<b>1529</b>
40 Hour Training Blocks	<b>38.21</b>			
<b>Totals:</b>	<b>WRTC</b>			
40 Hour Classes	27	613	25	1040
16 Hour Classes	18	385	0	288
8 Hour Classes	15	167	0	168
4 Hour Classes	8	141	0	40
2 Hour Classes	1	42	0	2
Misc. Classes	3	45	0	16
<b>Totals:</b>	<b>72</b>	<b>1393</b>	<b>25</b>	<b>1554</b>
40 Hour Training Blocks	<b>38.85</b>			
<b>Totals:</b>	<b>TOTALS</b>			
40 Hour Classes	104	2964	598	4104
16 Hour Classes	68	1275	101	1088
8 Hour Classes	52	723	23	515
4 Hour Classes	26	536	0	111
2 Hour Classes	4	196	0	7
Misc. Classes	25	678	12	364
<b>Totals:</b>	<b>279</b>	<b>6372</b>	<b>734</b>	<b>6189</b>
40 Hour Training Blocks	<b>154.73</b>			