



Commonwealth of Kentucky  
**Department of Corrections**

Department of Corrections

Health Services Building  
275 East Main Street  
P.O. Box 2400  
Frankfort, KY 40602-2400

Phone: 502-564-4726  
Fax: 502-564-5037



# Informational Handbook

Revised 1/5/2021

**Cookie Crews**  
Commissioner

**Hilarye Dailey**  
Deputy Commissioner  
of Support Services

**Lisa Lamb**  
Deputy Commissioner  
of Community  
Services and Local  
Facilities

**Randy White**  
Deputy Commissioner  
of Adult Institutions

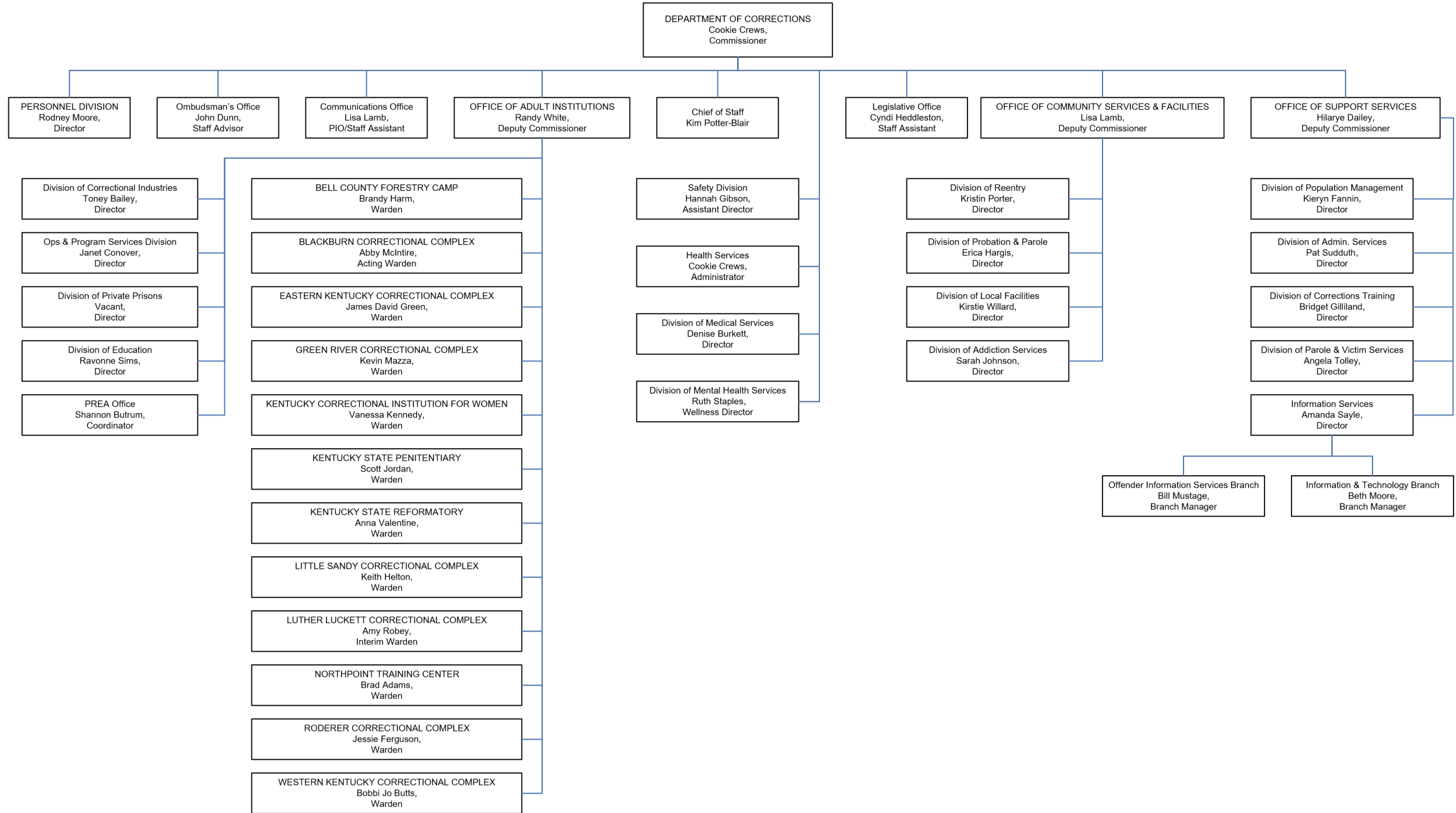
**Kim Potter-Blair**  
Chief of Staff

## Mission:

To protect the citizens of the Commonwealth and to provide a safe, secure and humane environment for staff and offenders in carrying out the mandates of the legislative and judicial processes; and, to provide opportunities for offenders to acquire skills which facilitate non-criminal behavior.

## TABLE OF CONTENTS

Kentucky Department of Corrections Organizational Chart .....	Page 2
Prison Rape Elimination Act .....	Page 3
Inmate Grievance Procedure .....	Page 4
Americans with Disabilities Act (ADA) .....	Page 5
Adult Institution Contact Information.....	Page 6
Visitation Information .....	Page 7
Divisions.....	Page 8-11
Victim Services.....	Page 12
Programming .....	Page 13



# Prison Rape Elimination Act (PREA)

In compliance with Section 115.11 of the Prison Rape Elimination Act (PREA) Standards, the Kentucky Department of Corrections (KDOC) has a zero-tolerance policy toward all forms of sexual abuse and sexual harassment.

## REPORT

To report any incident of sexual abuse or sexual harassment involving an offender housed within a Department of Corrections facility, you may call the PREA hotline toll free at **1-833-DOC-PREA (1-833-362-7732)**.

Please have any information or evidence available for the investigator who will be assigned to the case.

## AGENCY POLICY

KDOC has policies in place to ensure all allegations shall be promptly, thoroughly, and objectively investigated.

CPP 9.8 - Search Policy

CPP 14.7 - Sexual Abuse Prevention and Intervention Programs

14.8 - Lesbian, Gay, Bisexual, Transgender, and Intersex Offenders

### PREA Hotline Poster (English)

The Kentucky Department of Corrections has **ZERO TOLERANCE** for all forms of sexual conduct between offenders, staff, volunteers, contractors or visitors.



To report any incident of a sexual assault involving an offender, you may call the **PREA hotline** toll free at:

**1-833-362-PREA (7732)**

You may choose to remain anonymous.

PREA (Prison Rape Elimination Act)

### PREA Hotline Poster (Spanish)

El Departamento de Correcciones de Kentucky tiene una **CERO TOLERANCIA** para todas las formas de conducta sexual entre los delincuentes, el personal, voluntarios, contratistas o visitantes.



Para reportar cualquier incidente de un asalto sexual que implica un delincuentes, puede llamar a la **PREA línea** telefonica gratuita en.

**1-833-362-PREA (7732)**

Usted puede optar por permanecer en el anónimo.

PREA (Prison Rape Ley de Eliminación)

All reports are taken seriously and investigated as outlined in PREA.  
False accusations may be prosecuted.

# Inmate Grievance Procedure

The inmate grievance process may be reviewed in CPP 14.6, Inmate Grievance Procedure. This policy includes information on how an inmate can file a grievance and what subject matters are grievable.

An inmate may write or speak with an inmate grievance aide for grievance-related matters or assistance. Institutional Grievance Coordinators are available to the inmate population to address grievance-related matters as well.

CPP 14.6 is available to the inmate population and posted on the Department's website.

[Click here to access CPP 14.6, Inmate Grievance Procedure](#)

## Inmate Grievance Form Example

Rev. 2018	Attachment I CPP 14.6				
DEPARTMENT OF CORRECTIONS INMATE GRIEVANCE INFORMATION FORM					
NAME OF INSTITUTION _____	DATE FILED _____				
<table border="1" style="width: 100%;"> <tr> <td>GRIEVANT'S NAME _____</td> <td>GRIEVANCE NUMBER _____</td> </tr> <tr> <td>GRIEVANT'S NUMBER _____</td> <td>UNIT/HOUSING ASSIGNMENT _____</td> </tr> </table>		GRIEVANT'S NAME _____	GRIEVANCE NUMBER _____	GRIEVANT'S NUMBER _____	UNIT/HOUSING ASSIGNMENT _____
GRIEVANT'S NAME _____	GRIEVANCE NUMBER _____				
GRIEVANT'S NUMBER _____	UNIT/HOUSING ASSIGNMENT _____				
SUBJECT MATTER OF GRIEVANCES (Circle One)	DUE DATES				
1. Department Regulations					
2. Canteen	_____ Informal Resolution				
3. Conflict with Staff					
4. Food					
5. Furloughs					
6. Inmate Accounts	_____ Grievance Committee				
7. Housing Assignments					
8. Grievance Mechanism					
9. Institutional Physical Conditions					
10. Institutional Regulations					
11. Job Assignments					
12. Legal Services	_____ Warden/Administrative Review				
13. Mail					
14. Medical/Dental/Mental Health Services	_____ Notes/ETC.				
a. Access to Health Care Services (Health Care Grievance)					
b. Quality of Health Care (Health Care Grievance)					
c. Unfair or Discriminatory Treatment (Regular Grievance)					
d. Safety or Sanitation (Regular Grievance)					
15. Personal Property					
16. Permission to Marry					
17. Recreation					
18. Religious Services					
19. Telephone Calls					
20. Treatment Program Assignments					
21. Trips away from the facility					
22. Visiting					
23. Sexual Offense (PREA Grievance)					

## Americans with Disabilities Act (ADA)

The Department is required to comply with the Americans with Disabilities Act (ADA). A disability is a physical or mental impairment that substantially limits a major life activity such as seeing, hearing, walking, bathing or breathing (temporary conditions, like a broken leg, are not considered a disability). Under the Americans with Disabilities Act, the Department will ensure that inmates with disabilities have access to all services, privileges, facilities, advantages, and accommodations that is equivalent to access provided to similarly situated non-disabled inmates.

The Department will communicate effectively with inmates who are deaf and/or blind, ensuring that they can receive information from and provide information to staff. When needed for effective communication, the Department will provide “auxiliary aids and services.” This means devices or services that assist in communication, such as interpretation, hearing aids, captioning, videophones, amplifiers, etc.

However, if something a disabled inmate seeks – a particular job, for example – would be dangerous, posing a direct threat of injury or death to the inmate or others, the Department can bar the inmate’s access to that job after individualized consideration and consultation with appropriate medical experts.

Each institution has an assigned ADA Coordinator who is responsible for training and advising staff in ADA matters and monitoring ADA concerns such as accessibility requirements and accommodations. The ADA Coordinator also reviews requests for adaptive equipment and accommodations as well as ADA complaints. Inmates and staff may contact the ADA Coordinator during open door hours or send written correspondence via institutional mail.

[Click here to access Adult Institutions ADA Coordinators](#)

There is a federal court settlement agreement that governs services for deaf and hard-of-hearing inmates. It is available, along with additional information about such services, for all inmates to read on request in the inmate legal library.

# Adult Institution Contact Information

## [Bell County Forestry Camp](#)

560 Correctional Drive  
Pineville, KY 40977

Phone: (606) 337-7065  
Fax: (606) 337-1312

## [Eastern Kentucky Correctional Complex](#)

200 Road to Justice  
West Liberty, KY 41472

Phone: (606) 743-2800  
Fax: (606) 743-2811

## [KY Correctional Institution for Women](#)

3000 Ash Ave.  
Pewee Valley, Kentucky 40056

Phone: (502) 241-8454  
Fax: (502) 243-0079

## [Kentucky State Penitentiary](#)

266 Water Street  
Eddyville, Kentucky 42038

Phone: (270) 388-2211  
Fax: (270) 388-5529

## [Little Sandy Correctional Complex](#)

505 Prison Connector  
Sandy Hook, Kentucky 41171

Phone: (606) 738-6133  
Fax: (606) 738-6143

## [Northpoint Training Center](#)

P.O. Box 479, Hwy 33  
710 Walter Reed Rd.  
Burgin, Kentucky 40310

Phone: (859) 239-7012  
Fax: (859) 239-7560

## [Southeast State Correctional Complex](#)

P.O. Box 1600  
Wheelwright, Kentucky 41669

Phone: (606) 452-6300  
Fax: (606) 452-6330

## [Blackburn Correctional Complex](#)

3111 Spurr Road  
Lexington, KY 40511

Phone: (859) 246-2366  
Fax: (859) 246-2376

## [Green River Correctional Complex](#)

1200 River Road  
P.O. Box 9300  
Central City, KY 42330

Phone: (270) 754-5415  
Fax: (270) 754-2732

## [Kentucky State Reformatory](#)

3001 W Hwy 146  
LaGrange, Kentucky 40032

Phone: (502) 222-9441  
Fax: (502) 222-0240

## [Lee Adjustment Center](#)

168 Lee Adjustment Center Drive  
Beattyville, KY 41311

Phone: (606) 464-2866  
Fax: (606) 464-9654

## [Western Kentucky Correctional Complex](#)

374 New Bethel Church Road  
Fredonia, KY 42411

Phone: (270) 388-9781  
Fax: (270) 388-0031

## [Roederer Correctional Complex](#)

P.O. Box 69  
LaGrange, Kentucky 40031

Phone: (502) 222-0170/222-0173  
Fax: (502) 225-0084

## [Luther Lockett Correctional Complex](#)

Dawkins Road, Box 6  
LaGrange, Kentucky 40031

Phone: (502) 222-0363  
Fax: (502) 222-8112

General institutional information may be found by clicking the names above.

# Visitation Information

CPP 16.1, Inmate Visits may be reviewed for visitation information. Further visitation information may be reviewed below for each respective adult institution.

[Click here to access CPP 16.1, Inmate Visits](#)

## INSTITUTIONAL VISITATION INFORMATION

- [Bell County Forestry Camp \(BCFC\)](#)
- [Blackburn Correctional Complex \(BCC\)](#)
- [Eastern Kentucky Correctional Complex \(EKCC\)](#)
- [Green River Correctional Complex \(GRCC\)](#)
- [Kentucky State Penitentiary \(KSP\)](#)
- [Kentucky State Reformatory \(KSR\)](#)
- [Kentucky Correctional Institution for Women \(KCIW\)](#)
- [Lee Adjustment Center \(LAC\)](#)
- [Little Sandy Correctional Complex \(LSCC\)](#)
- [Luther Lockett Correctional Complex \(LLCC\)](#)
- [Northpoint Training Center \(NTC\)](#)
- [Western Kentucky Correctional Complex \(WKCC\)](#)
- [Roederer Correctional Complex \(RCC\)](#)
- [Southeast State Correctional Complex \(SSCC\)](#)





# Divisions

Information about the different divisions of the Kentucky Department of Corrections may be found below. For further information, click the division name to be redirected to its respective website.

## ADDICTION SERVICES

The Division of Addiction Services is responsible for the clinical and administrative oversight of all substance abuse treatment related to inmates, parolees and probationers within our care as determined by statute.



## CLASSIFICATION

The Population Management Division/Classification Branch is responsible for overseeing classification actions in all state institutions, contract facilities, and full service county jails and for monitoring the Assessment/Classification Centers.

## EDUCATION

The Division of Education develops and incorporates comprehensive curricula, strategic planning, and support documentation that advances and enhances the Commonwealth of Kentucky's legal provisions for education and quality of life for its offenders.



## HEALTH SERVICES

The Health Services Division provides administrative oversight and direction for all aspects of inmate health care, including psychiatric and dental services.

## TRAINING

The mission of the Division of Corrections Training is to design, develop and deliver training programs that meet the needs and mandates of the employees of the Kentucky Department of Corrections.



# STATE CORRECTIONS COMMISSION

The Kentucky State Corrections Commission is charged with awarding all grant money to community corrections programs along with developing and implementing a statewide strategic plan for the state and community corrections programs as well as other functions defined in KRS 196.702. The Commission is also charged with providing oversight for the Prison Industry Enhancement Certification Program and serves as the Parole Board Nominating Committee.

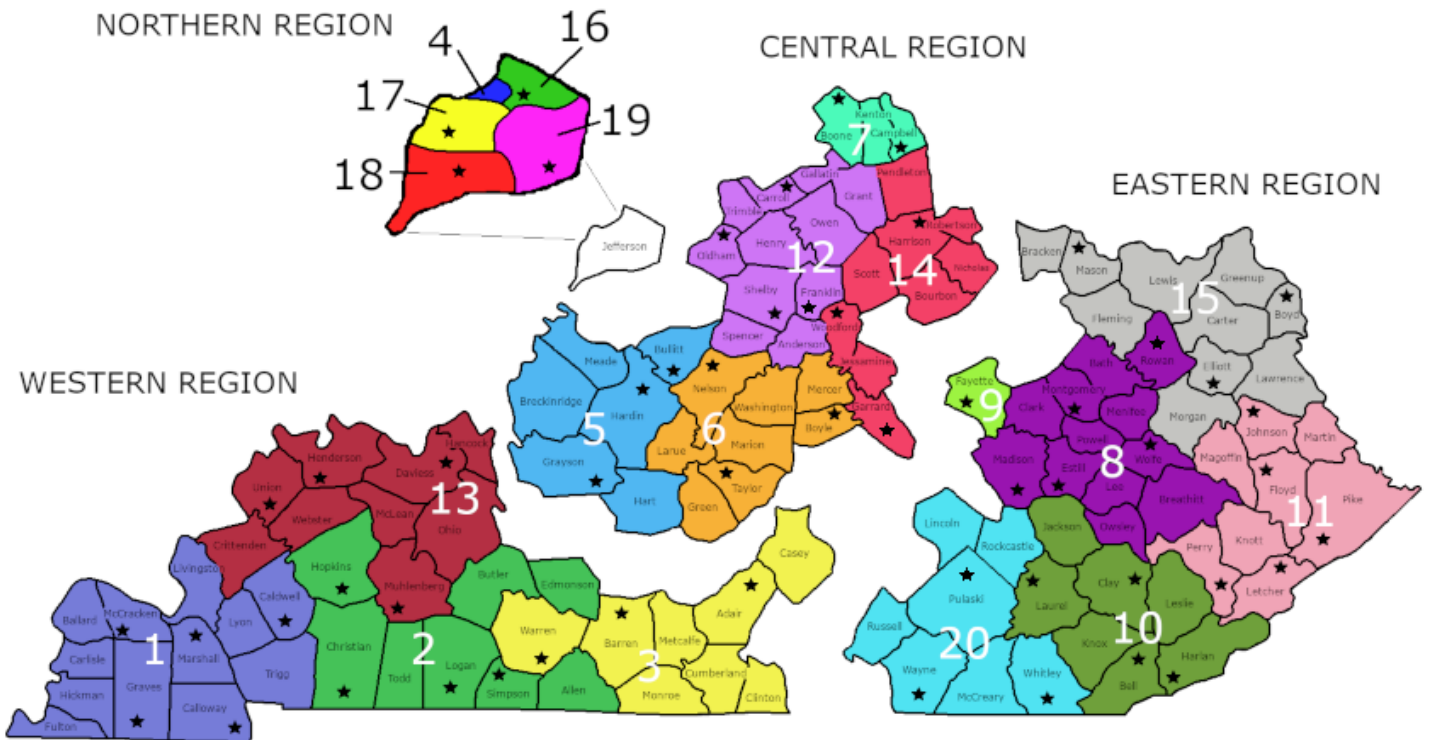
# KENTUCKY CORRECTIONAL INDUSTRIES

The Kentucky Correctional Industries was established in 1954 and has since provided goods and services for the private industry as well as the citizens of Kentucky.

# PROBATION & PAROLE

The mission of the Division of Probation and Parole is to enhance public safety and promote offender reintegration in the community through proactive supervision and referral to community based resources.

## Probation & Parole Regions



## Statewide Probation & Parole Phone List



## VICTIM SERVICES


The Victim Services Branch is committed to assisting victims and survivors throughout the duration of the offender's incarceration and supervision. The Victim Services Branch ensures that crime victims are treated with dignity and respect. A victim's need for assistance does not stop once an offender has been sentenced. In fact, it continues throughout an offender's incarceration and supervision.

If you are a victim of a crime, please contact the Victim Services Branch to ensure you are registered for assistance.



Phone: 502-564-5061  
Toll Free: 877-687-6818

Fax: 502-564-9836




**VINE**<sup>®</sup>

Commonwealth of Kentucky  
Department of Corrections  
Victim Services

**Kentucky VINE Services**

Information & Notification for  
Offender Custody Status, Court Hearings,  
Protective Order Information

*Victims have the  
right to know.*



**1-800-511-1670**  
**TTY: 1-866-847-1298**  
**www.vinelink.com**

A service provided by:  
**Kentucky Department of  
Corrections**

# PROGRAMMING


The Department shall use a series of decision-making points to determine the effectiveness of programs offered. Programs currently in the department and new programs submitted for review to the department shall be evaluated based on these decision-making points annually by the Branch Manager of Programs.



A list of the Department’s approved programs may be reviewed on the program section of the website and the program catalogue.

## Programming Policies


- CPP 20.1 Educational Courses and Educational Good Time
- CPP 20.2 Apprenticeship Courses
- CPP 30.1 Program Approval Process, Evaluation, and Measurement
- CPP 30.2 Program Credit
- CPP 30.3 Risk and Needs Assessment and Reentry Programming Training and Quality Assurance
- CPP 30.4 Probation Program Credit
- CPP 30.5 Sex Offender Treatment Program
- CPP 30.6 Division of Addiction Services Substance Abuse Program
- CPP 30.7 SAP Program Good Time Credit
- CPP 30.8 Pretrial Substance Abuse Program (PSAP)



**Course Catalogue of Offender Programs and Education**

---


*Kentucky Department of Corrections  
Local Facilities*



**Course Catalogue of Offender Programs**

---

*Kentucky Department of Corrections  
Adult Institutions*



**Course Catalogue of Offender Programs and Education**

---

*Kentucky Department of Corrections  
Division of Probation and Parole  
Reentry Service Centers  
Recovery Kentucky Centers*